

APARTMENT

G.09

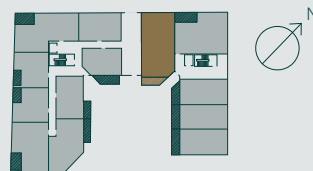
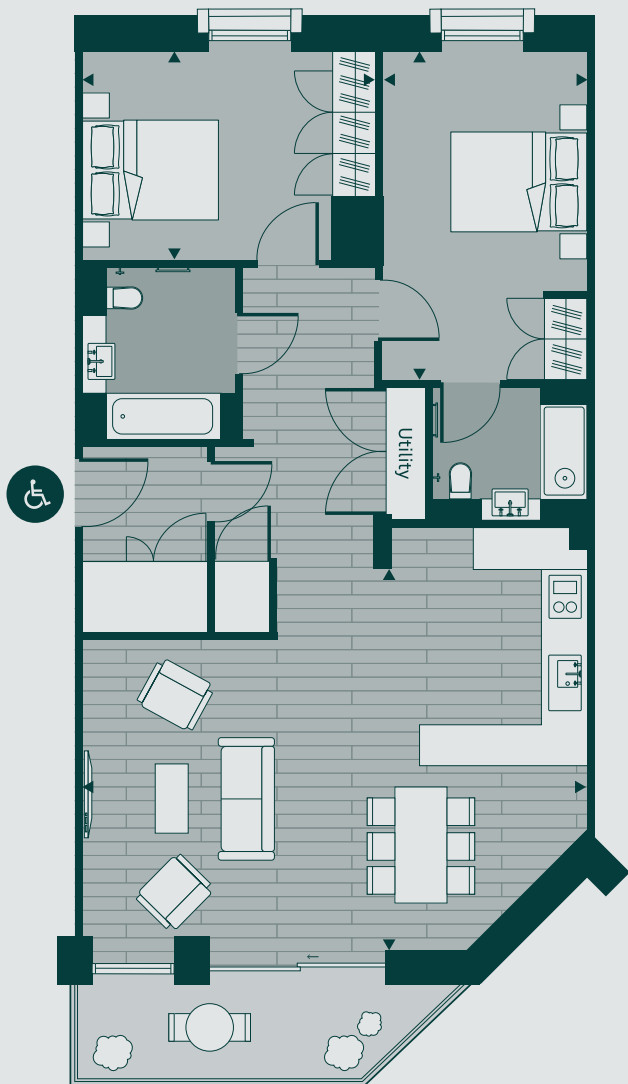
2 Bedroom Apartment (Wheelchair Adaptable)

TOTAL INTERNAL AREA

98.3 m²
1,058 sq ft

TOTAL TERRACE AREA

7.5 m²
80.7 sq ft



KITCHEN / LIVING / DINING

5.7m x 7.4m
18'7" x 24'3"

BEDROOM 1

5m x 3m
16'4" x 9'8"

BEDROOM 2

3.2m x 4.3m
10'5" x 14'1"



+44 (0)20 3641 1283
newhomes@knightfrank.com

Development By:



City of Westminster

Disclaimer

Whilst every care has been taken in preparing these particulars, no warrant or guarantee is given or implied as to accuracy of any of the contents by Knight Frank or the vendor. Intending purchasers should satisfy themselves as to their accuracy on all matters.

Floor areas are subject to verification following completion. Purchasers must rely on their own inspection to verify any information provided. All dimensions are within + or - 10%. Plans are not to scale. All measurements are approximate. All furniture and planting shown for context only and are not supplied with the apartment. All total areas are Net Saleable Areas.